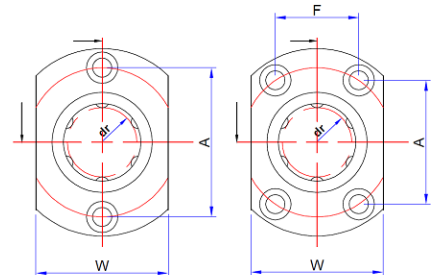
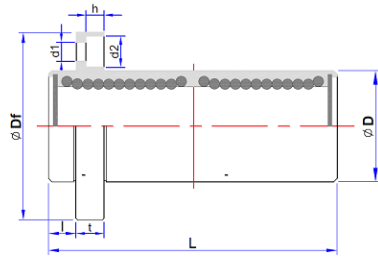


Pilot End Two Side Flange Linear Bearing Long Type-LMTP-L



LMTP6L~13L

LMTP16L~30L

Main Dimensions																	Squar- eness	Eccentricity (max.)	Basic load rating		
Model No.	Number of ball rows	Weight g	Inscribed circle diameter		Outer diameter		Length		/	Flange					Hole for attachment				Dynamic C(kgf)	Static Co(kgf)	
			dr	Tolerance	D	Tolerance	L	Tolerance		Df	W	t	A	F	d1	d2					h
LMTP 6L	4	28	6	0	12	0	35	0	5	28	18	5	20	3.5	6	3.1	0.015	0.015	33	54	
LMTP 8L		47	8		15	-0.013	45			32	21		24								
LMTP10L		90	10		19	-0.010	55			40	25		29								
LMTP12L		102	12		21		0			57	42		27						32		
LMTP13L		123	13		23		-0.016			61	43		29						33		
LMTP16L		182	16		28		70			48	34		31						22		
LMTP20L	5	247	20	32	0	80	8	54	38	8	36	24	5.5	9	5.1	0.020	0.020	143	280		
LMTP25L		525	25	40	0	112	0	8	62	46	8	40						32			
LMTP30L	6	645	30	45	-0.012	-0.019	123	-0.40	10	74	51	10	49	35	6.6	11	6.1	254	560		