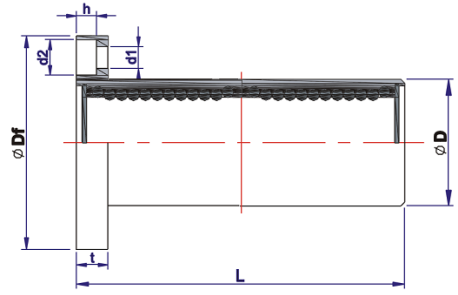
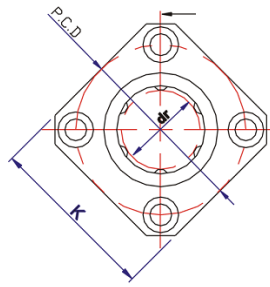


Square Flange Linear Bearing Long Type-LMK-L



LMK-LUU

Main Dimensions																	Squar- eness	Eccentricity (max.)	Basic load rating			
Model No.	Number of ball rows	Weight g	Inscribed circle diameter		Outer diamete		Length		Flange				Hole for attachment			Dynamic C(kgf)			Static Co(kgf)			
			dr	Tolerance	D	Tolerance	L	Tolerance	Df	K	t	P.C.D	d1	d2	h							
LMK 6L	4	25	6	0	12	0	35	0	28	22	5	20	3.5	6	3.1	0.015	0.015	33	54			
LMK 8L		43	8		15	-0.013	45		32	25		24										
LMK10L		78	10		19	55	40		30	29												
LMK12L		90	12		21	0	57		42	32		32						4.5	7.5	4.1	60	112
LMK13L		108	13		23	-0.016	61		43	34		33									83	160
LMK16L	5	165	16	28	70	48	37	38	8	43	5.5	9	5.1	0.020	0.020	126	240					
LMK20L		225	20	32	0	80	54	42								43	143	280				
LMK25L	6	500	25	0	40	0	112	0	62	50	10	51	6.6	11	6.1	0.025	0.025	159	320			
LMK30L		590	30	45	-0.012	-0.019	123		74	58		60						254	560			
LMK35L		930	35	52	0	135	82		64	67		270						640				
LMK40L		1380	40	60	0	151	96		75	78		350						820				
LMK50L		3400	50	80	-0.015	-0.022	192		116	92		98						620	1622			
LMK60L		4060	60	90	0	209	134		106	18		112						11	17.5	10.8	770	2040