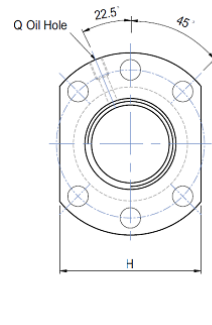
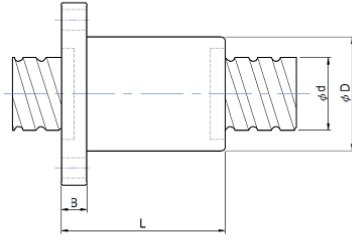
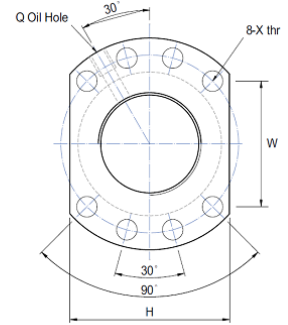


FSU



Type A



Type B

型號	規格															
	d	l	Da	D	A	B	L	W	X	Type	H	Q	n	Ca(kgf)	Coa(kgf)	K
●1605-3	16	5	3.175	28	48	10	42	38	5.5	A	40	M6	T3	765	1240	18
●1605-4	16	5	3.175	28	48	10	50	38	5.5	A	40	M6	T4	980	1650	23
1610-3	16	10	3.175	28	48	12	65	38	5.5	A	40	M6	T3	760	1238	18
2005-3	20	5	3.175	36	58	10	47	47	6.6	A	44	M6	T3	860	1710	21
●2005-4	20	5	3.175	36	58	10	53	47	6.6	A	44	M6	T4	1100	2280	28
2504-4	25	4	2.381	40	62	11	46	51	6.6	A	48	M6	T4	666	1920	23
●2505-4	25	5	3.175	40	62	10	53	51	6.6	A	48	M6	T4	1250	3070	33
2510-3	25	10	4.762	40	62	12	75	51	6.6	A	48	M6	T3	1620	3205	27
2510-4	25	10	4.762	40	62	12	85	51	6.6	A	48	M6	T4	2070	4270	35
●3205-4	32	5	3.175	50	80	12	53	65	9	A	62	M6	T4	1400	4080	41
3210-3	32	10	6.35	50	80	16	77.5	65	9	A	62	M6	T3	2605	5310	33
3210-4	32	10	6.35	50	80	16	90	65	9	A	62	M6	T4	3340	7080	45
●4005-4	40	5	3.175	63	93	16	56	78	9	B	70	M8	T4	1575	5290	49
4006-4	40	6	3.969	63	93	14	60	78	9	B	70	M6	T4	2130	6410	51
4010-4	40	10	6.35	63	93	18	93	78	9	B	70	M8	T4	3850	9470	53
5010-4	50	10	6.35	75	110	18	93	93	11	B	85	M8	T4	4390	12400	65
6310-4	63	10	6.35	90	125	18	98	108	11	B	95	M8	T3	5020	16450	79
6320-3	63	20	9.525	95	135	20	138	115	13.5	B	100	M8	T3	8490	23610	79
8010-4	80	10	6.35	105	145	20	98	125	13.5	B	110	M8	T4	5510	21200	95
8020-3	80	20	9.525	125	165	25	143	145	13.5	B	130	M8	T3	9770	31700	97

●可生產左牙