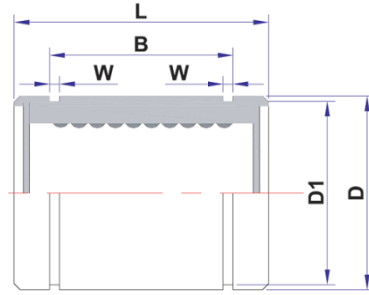
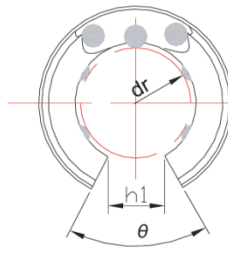


Linear Bearing Open Type-LM-OP



LM-OPUU



Main Dimensions															Basic load rating	
Model No.	Number of ball rows	Weight g	Inscribed circle diameter		Outer diameter		Length		Outer locking groove			W	h1	θ	Dynamic C(kgf)	Static Co(kgf)
			dr	Tolerance	D	Tolerance	L	Tolerance	B	Tolerance	D1					
LM10 OP	3	23	10	-0.009	19	-0.013	29	0	22	0	18	1.3	6.8	80°	38	56
LM12 OP		25	12		21		30		23		20	1.3	8		42	61
LM13 OP		34	13		23		32		23		22	1.3	9		52	79
LM16 OP	4	52	16	0	28	0	37	-0.20	26.5	-0.20	27	1.6	11	60°	79	120
LM20 OP		69	20		32		42		30.5		30.5	1.6	11		88	140
LM25 OP	5	188	25	0	40	0	59	0	41	0	38	1.85	12.5	50°	100	160
LM30 OP		210	30	-0.010	45	-0.016	64		44.5		43	1.85	15		160	280
LM35 OP		335	35	0	52	0	70		49.5		49	2.1	17.5		170	320
LM40 OP		500	40	0	60	0	80		60.5		57	2.1	20		220	410
LM50 OP		1400	50	-0.012	80	-0.019	100		-0.30		74	-0.30	76.5		2.6	25
LM60 OP		1700	60	0	90	0	110	85		86.5	3.15	30	480	1020		