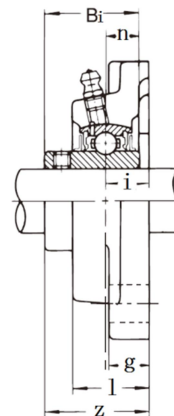
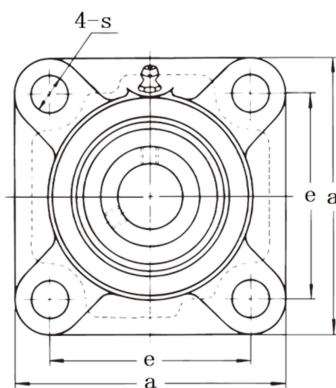
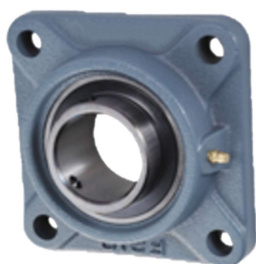


UCF



型號	主要規格		重點尺寸(mm)									額定荷載(kgs)		重量 kgs	
	mm	in	a	e	i	g	l	s	z	Bi	n	螺絲尺寸	額定動 荷載		額定靜 荷載
UCF-201	12	1/2	86	64	15	12	25.5	12	33.3	31	12.7	M10	1280	750	0.64
UCF-202	15	9/16, 5/8	86	64	15	12	25.5	12	33.3	31	12.7	M10	1280	750	0.62
UCF-203	17	11/16	86	64	15	12	25.5	12	33.3	31	12.7	M10	1280	750	0.61
UCF-204	20	3/4	86	64	15	12	25.5	12	33.3	31	12.7	M10	1280	750	0.59
UCF-205	25	7/8, 1	95	70	16	14	27	12	35.7	34	14.3	M10	1400	790	0.82
UCF-206	30	1 1/8, 1 3/16	108	83	18	14	31	12	40.2	38.1	15.9	M10	1950	1130	1.1
UCF-207	35	1 1/4, 1 3/8	117	92	19	16	34	14	44.4	42.9	17.5	M12	2570	1540	1.5
UCF-208	40	1 1/2, 1 9/16	130	102	21	16	36	16	51.2	49.2	19	M14	2910	1790	2
UCF-209	45	1 5/8, 1 3/4	137	105	22	18	38	16	52.2	49.2	19	M14	3270	2040	2.4
UCF-210	50	1 7/8, 1 15/16	143	111	22	18	40	16	54.6	51.6	19	M14	3510	2320	2.5
UCF-211	55	2, 2 1/8	162	130	25	20	43	19	58.4	55.6	22.2	M16	4330	2940	3.4
UCF-212	60	2 1/4, 2 3/8	175	143	29	20	48	19	68.7	65.1	25.4	M16	5240	3610	4.6
UCF-213	65	2 1/2	187	149	30	20	50	19	69.7	65.1	25.4	M16	5720	4000	5.5
UCF-214	70	2 3/4	193	152	31	24	54	19	75.4	74.6	30.2	M16	6220	4400	6.1
UCF-215	75	2 15/16, 3	200	159	34	24	56	19	78.5	77.8	33.3	M16	6740	4820	6.9

連座軸承