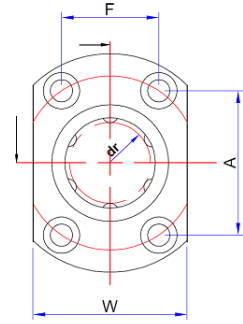
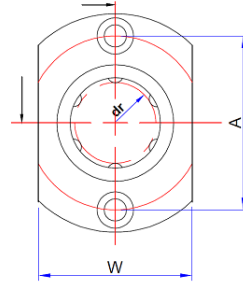
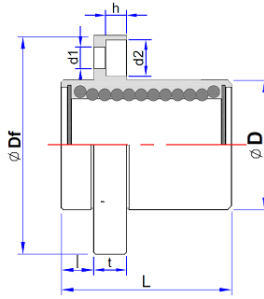


Pilot End Two Side Flange Linear Bearing-LMTP



LMTP6~13

LMTP16~30

Main Dimensions															Squar- eness	Eccentricity (max.)	Basic load rating		
Model No.	Number of ball rows	Weight		Inscribed circle diameter		Outer diameter		Length		Flange	Hole for attachment			Dynamic			Static		
		g	dr	Tolerance	D	Tolerance	L	Tolerance	Df		W	t	A					F	C(kgf)
LMTP6	4	21	6	0	12	0	19	±0.30	5	28	18	20	3.5	6	3.1	0.012	0.012	21	27
LMTP8		33	8		15	-0.013	24			32	21	24						27	41
LMTP10		64	10		19	29	40			25	29	38						56	
LMTP12		68	12		-0.009	21	0			30	42	27						32	61
LMTP13		81	13		23	-0.016	32			0	43	29						33	79
LMTP16		5	112		16	28	37			-0.20	48	34						31	22
LMTP20	167		20	32	42	54	38	36	24	88	140								
LMTP25	6		325	25	0	40	0	59	0	40	32	100	160						
LMTP30		388	30	-0.010	45	-0.019	64	-0.30	10	74	51	10	49	35	160	280			