

Standard Guide Rails, Steel version

Guide Rails with Plastic Mounting Hole Plugs

Guide rail R1805 .5. ..

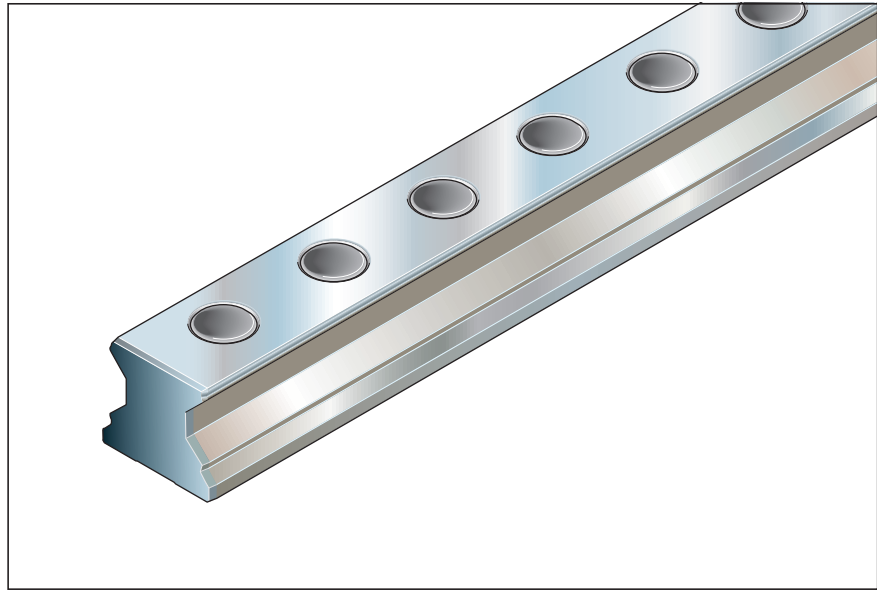
For mounting from above,
with plastic mounting hole plugs
(included)

Notes

Plastic mounting hole plugs are also available as accessories.

For details on how to mount the plastic plugs, see "Mounting Instructions for Roller Rail Systems".

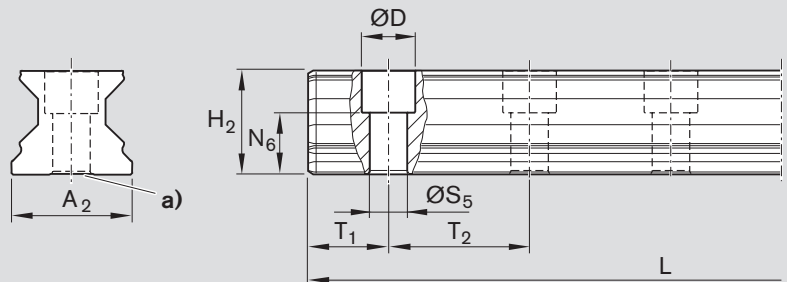
For corrosion-resistant guide rails, Resist CR, matte silver hard chrome plated, see section on "Standard Guide Rails, Resist CR", part numbers R1845 .0. ..



Size	Accuracy class	Guide rail		Spacing T_2 mm	Recommended rail lengths Number of holes n_B / Rail length L (mm)
		One-piece Part number, Rail length L (mm)	Composite Part number and number of sections, Rail length L (mm)		
25	H	R1805 253 31,	R1805 253 3.,	30	acc. to formula $L = n_B \cdot T_2 - 4$ up to 133/3986 max.
	P	R1805 252 31,	R1805 252 3.,		
	SP	R1805 251 31,	R1805 251 3.,		
	UP	R1805 259 31,	R1805 259 3.,		
35	H	R1805 353 31,	R1805 353 3.,	40	acc. to formula $L = n_B \cdot T_2 - 4$ up to 100/3996 max.
	P	R1805 352 31,	R1805 352 3.,		
	SP	R1805 351 31,	R1805 351 3.,		
	UP	R1805 359 31,	R1805 359 3.,		
45	H	R1805 453 31,	R1805 453 3.,	52.5	acc. to formula $L = n_B \cdot T_2 - 4$ up to 76/3986 max.
	P	R1805 452 31,	R1805 452 3.,		
	SP	R1805 451 31,	R1805 451 3.,		
	UP	R1805 459 31,	R1805 459 3.,		
55	H	R1805 553 31,	R1805 553 3.,	60	acc. to formula $L = n_B \cdot T_2 - 4$ up to 66/3956 max.
	P	R1805 552 31,	R1805 552 3.,		
	SP	R1805 551 31,	R1805 551 3.,		
	UP	R1805 559 31,	R1805 559 3.,		
65	H	R1805 653 31,	R1805 653 3.,	75	acc. to formula $L = n_B \cdot T_2 - 4$ up to 53/3971 max.
	P	R1805 652 31,	R1805 652 3.,		
	SP	R1805 651 31,	R1805 651 3.,		
	UP	R1805 659 31,	R1805 659 3.,		

Standard guide rails R1805 .5. ..

Plastic mounting hole plugs are supplied with the guide rails and are also available as accessories. For details on how to mount the plastic plugs, see "Mounting Instructions for Roller Rail Systems".



- a) Due to manufacturing reasons, guide rails in accuracy class H may not have a slot on the base.
For mounting on mineral cast beds, guide rails with a flat base (without slot) are available in accuracy classes P and SP on request.

Size	Dimensions (mm)									Weight kg/m
	A_2	D	H_2	$L_{max}^{1)}$	$N_6^{\pm 0.5}$	S_5	T_{1min}	$T_{1S}^{2)}$	T_2	
25	23	11	23.40	4000	14.3	7	10	13.00	30.0	3.1
35	34	15	30.80	4000	19.4	9	12	18.00	40.0	6.3
45	45	20	38.80	4000	22.4	14	16	24.25	52.5	10.3
55	53	24	47.55	4000	28.7	16	18	28.00	60.0	13.1
65	63	26	57.85	4000	36.5	18	20	35.50	75.0	17.4

- 1) For sizes 35 to 65 in accuracy class H and P, one-piece guide rails up to approx. 6000 mm in length can be supplied in special cases.
For availability of accuracy class SP, please consult us.
- 2) Preferred dimension T_{1S} with tolerances $+0.5/-1.0$