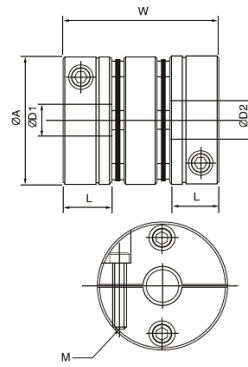


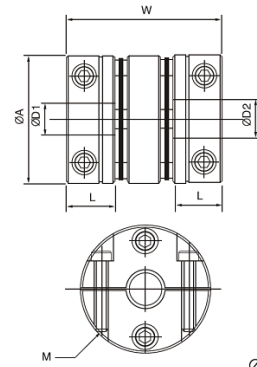
# MHC-C



Clamp type



Ø27-Ø35



Ø40-Ø95

型号	A	L	W	M	d1×d2 标准孔径(H7)		重量 (g)
					Min	Max	
MHC-27C	27	11	35	5	10	M3	35
MHC-35C	35	12	38	6	14	M3	62
MHC-40C	40	15	48	8	16	M4	116
MHC-45C	45	15	48	10	19	M4	131
MHC-50C	50	20	62	12	22	M5	220
MHC-57C	57	20	62	12	25	M5	310
MHC-68C	68	24	74	14	32	M6	565
MHC-82C	82	30	98	19	35	M8	1300
MHC-95C	95	30	98	22	45	M8	1500

型号	一般扭力 (N.m)	最大扭力 (N.m)	最高回转速 (Rpm/min)	惯性 (Kg . m <sup>2</sup> )	容许偏心 (mm)	容许偏角 (°)	容许轴向位差 (mm)
MHC-27C	1.8	3.6	10000	3.0×10 <sup>-6</sup>	0.15	5	±0.33
MHC-35C	4.0	8.0	10000	10.5×10 <sup>-6</sup>	0.17	5	±0.4
MHC-40C	7.0	14.0	10000	26×10 <sup>-6</sup>	0.22	5	±0.5
MHC-45C	10.0	20.0	10000	38×10 <sup>-6</sup>	0.22	5	±0.6
MHC-50C	16.0	32.0	10000	88×10 <sup>-6</sup>	0.24	5	±0.7
MHC-57C	26.0	52.0	10000	142.5×10 <sup>-6</sup>	0.27	5	±0.8
MHC-68C	62.0	124.0	10000	376×10 <sup>-6</sup>	0.35	5	±0.9
MHC-82C	100.0	200.0	10000	1080×10 <sup>-6</sup>	0.55	5	±1.2
MHC-95C	180.0	360.0	10000	1940×10 <sup>-6</sup>	0.55	5	±1.3