

Standard Ball Guide Rails made of steel

# SNS with Plastic Mounting Hole Plugs




## R1605 .0. ... / R1605 .C. ...

For mounting from above, with plastic mounting hole plugs

**Note on installation**

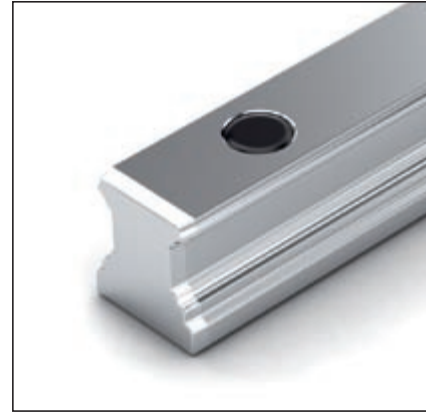
- Plastic mounting hole plugs included in scope of supply.
- Follow the mounting instructions!
- Send for the publication "Mounting Instructions for Ball Rail Systems."
- Composite guide rails also available.

**Further Ball Guide Rails SNS and accessories**

- Corrosion-resistant Ball Guide Rails Resist NR  133 Resist CR  135
- Plastic Mounting Hole Plugs  179

**Ball guide rail R1605 .B. ... with flat underside for mounting on components made of cast mineral materials**

- In size 25 - 45 and accuracy class P and SP available on request.



**Options and part numbers**

| Size | Ball guide rail with size | Accuracy class |   |   |    |    | Number of sections ., Rail length L (mm), ... |           | Hole spacing T (mm) | Recommended rail length according to formula $L = n_B \cdot T - 4 \text{ mm}$ |  |  |
|------|---------------------------|----------------|---|---|----|----|---|-----------|---------------------|---|--|--|
|      |                           | N              | H | P | SP | UP | One-piece                                     | Composite |                     | Maximum number of holes $n_B$   |  |  |
| 15   | R1605 10                  | 4              | 3 | 2 | 1  | 9  | 31, ...                                       | 3, ...    | 60                  | 64  |  |  |
| 20   | R1605 80                  | 4              | 3 | 2 | 1  | 9  | 31, ...                                       | 3, ...    | 60                  | 64  |  |  |
| 25   | R1605 20                  | 4              | 3 | 2 | 1  | 9  | 31, ...                                       | 3, ...    | 60                  | 64  |  |  |
| 30   | R1605 70                  | 4              | 3 | 2 | 1  | 9  | 31, ...                                       | 3, ...    | 80                  | 48  |  |  |
| 35   | R1605 30                  | 4              | 3 | 2 | 1  | 9  | 31, ...                                       | 3, ...    | 80                  | 48  |  |  |
| 45   | R1605 40                  | 4              | 3 | 2 | 1  | 9  | 31, ...                                       | 3, ...    | 105                 | 36  |  |  |
| 55   | R1605 50                  | 4              | 3 | 2 | 1  | 9  | 31, ...                                       | 3, ...    | 120                 | 32  |  |  |
| 65   | R1605 60                  | 4              | 3 | 2 | 1  | 9  | 31, ...                                       | 3, ...    | 150                 | 25  |  |  |
| e.g. | R1605 70                  | 3              |   |   |    |    | 31, 1676                                      |           |                     |   |  |  |

**Ordering example 1:**

(up to  $L_{max}$ )

Options:

- Ball Guide Rail SNS
- Size 30
- Accuracy class H
- One-piece
- Rail length  $L = 1676 \text{ mm}$

Part number:

R1605 703 31, 1676 mm

**Ordering example 2:**

(over  $L_{max}$ )

Options:

- Ball Guide Rail SNS
- Size 30
- Accuracy class H
- **2 sections**
- Rail length  $L = 5116 \text{ mm}$

Part number:

R1605 703 32, 5116 mm

**Ordering example 3:**

(up to  $L_{max}$ , with flat underside)

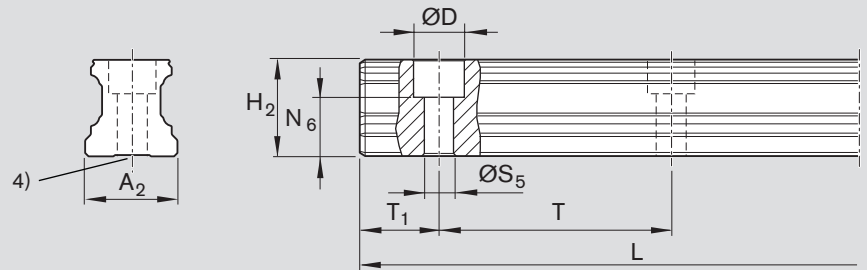
Options:

- Ball Guide Rail SNS
- Size 30
- Accuracy class H
- One-piece
- Rail length  $L = 1676 \text{ mm}$

Part number:

R1605 7C3 31, 1676 mm

## Ball Guide Rails SNS



| Size | Dimensions (mm) |      |                              |                                |                                |                |     |                    |                               |                    | Weight<br>(kg/m) |
|------|-----------------|------|------------------------------|--------------------------------|--------------------------------|----------------|-----|--------------------|-------------------------------|--------------------|------------------|
|      | A <sub>2</sub>  | D    | H <sub>2</sub> <sup>1)</sup> | L <sub>max</sub> <sup>2)</sup> | N <sub>6</sub> <sup>±0.5</sup> | S <sub>5</sub> | T   | T <sub>1 min</sub> | T <sub>1S</sub> <sup>3)</sup> | T <sub>1 max</sub> |                  |
| 15   | 15              | 7.4  | 16.20                        | 3 836                          | 10.3                           | 4.4            | 60  | 10                 | 28.0                          | 50                 | 1.4              |
| 20   | 20              | 9.4  | 20.55                        | 3 836                          | 13.2                           | 6.0            | 60  | 10                 | 28.0                          | 50                 | 2.4              |
| 25   | 23              | 11.0 | 24.25                        | 3 836                          | 15.2                           | 7.0            | 60  | 10                 | 28.0                          | 50                 | 3.2              |
| 30   | 28              | 15.0 | 28.35                        | 3 836                          | 17.0                           | 9.0            | 80  | 12                 | 38.0                          | 68                 | 5.0              |
| 35   | 34              | 15.0 | 31.85                        | 3 836                          | 20.5                           | 9.0            | 80  | 12                 | 38.0                          | 68                 | 6.8              |
| 45   | 45              | 20.0 | 39.85                        | 3 776                          | 23.5                           | 14.0           | 105 | 16                 | 50.5                          | 89                 | 10.5             |
| 55   | 53              | 24.0 | 47.85                        | 3 836                          | 29.0                           | 16.0           | 120 | 18                 | 58.0                          | 102                | 16.2             |
| 65   | 63              | 26.0 | 59.85                        | 3 746                          | 38.5                           | 18.0           | 150 | 20                 | 73.0                          | 130                | 22.4             |

1) Dimension H<sub>2</sub> without cover strip

2) For size 20 - 45 in accuracy class N, H and P, one-piece guide rails are available on request up to the following lengths:

Size 20 - 25: up to 5816 mm

Size 30 - 35: up to 5836 mm

Size 45: up to 5771 mm

3) Recommended: preferred dimension T<sub>1S</sub> with tolerances ± 0.75.

4) For manufacturing reasons, ball guide rails may have a flat underside (without groove).